

# ROWAN



## KAFFE FASSETT KNIT ALONG 2017

Week 11 - Pin Wheel

KAK17-00011

v.1






# KAFFE FASSETT

## KNIT ALONG 2017

Week 11 - Pin Wheel

Craft 

Skill Level 

KAK17-00011 

v.1

### YARN

#### Pure Wool Superwash Worsted

A Rich Red 124

B Pretty Pink 113

**More Yarn  
Information**

on [knitrowan.com](http://knitrowan.com)

### NEEDLES

1 pair 4½mm (no 7) (US 7) needles

### TENSION

20 sts and 25 rows to 10 cm measured over patterned stocking stitch using 4½mm (US 7) needles.

### FINISHED SIZE

Square measures approx 30 cm x 24 cm

### Pin Wheel Square [makes 2 squares]

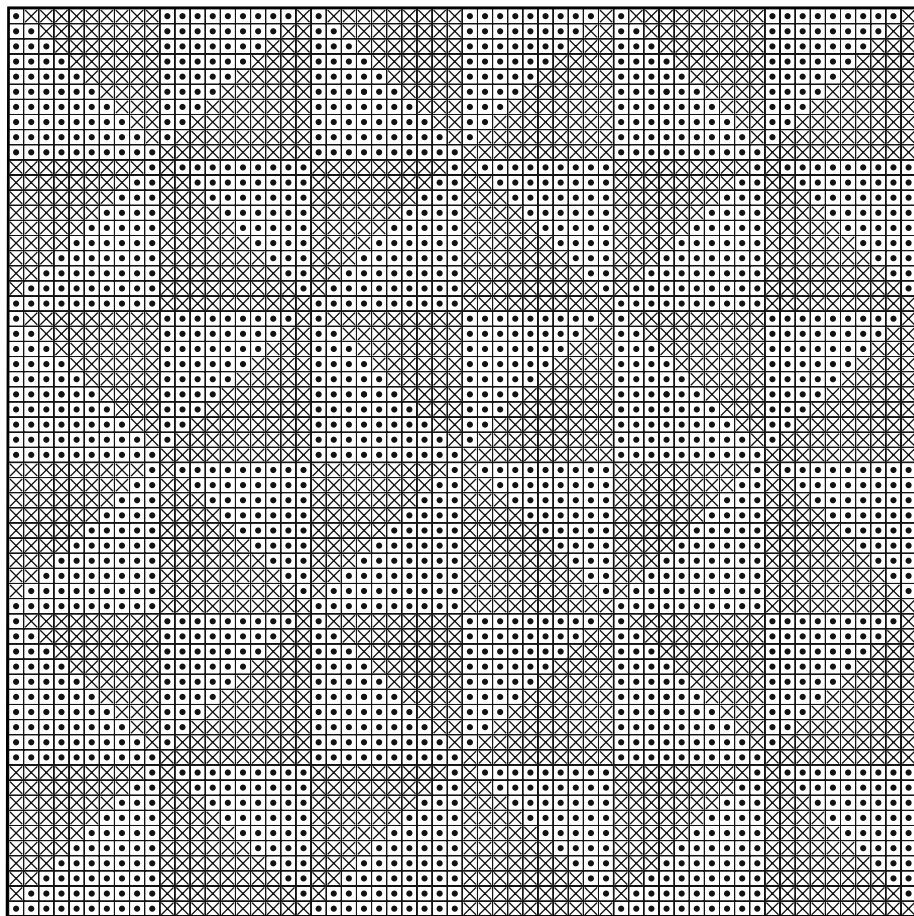
Using 4½mm (US 7) needles and yarn A cast on 60 sts.

Beginning at bottom right hand corner, joining in and breaking off colours as required and using the **intarsia** technique as described on the information page, work in patt from chart, which is worked entirely in st st beg with a K row until chart row 60 has been completed, ending with RS facing for next row.

Cast off.

**Information  
Pages**

## Stage 11 - Pin Wheel



Key



[Click the image for a full screen, printable version](#)